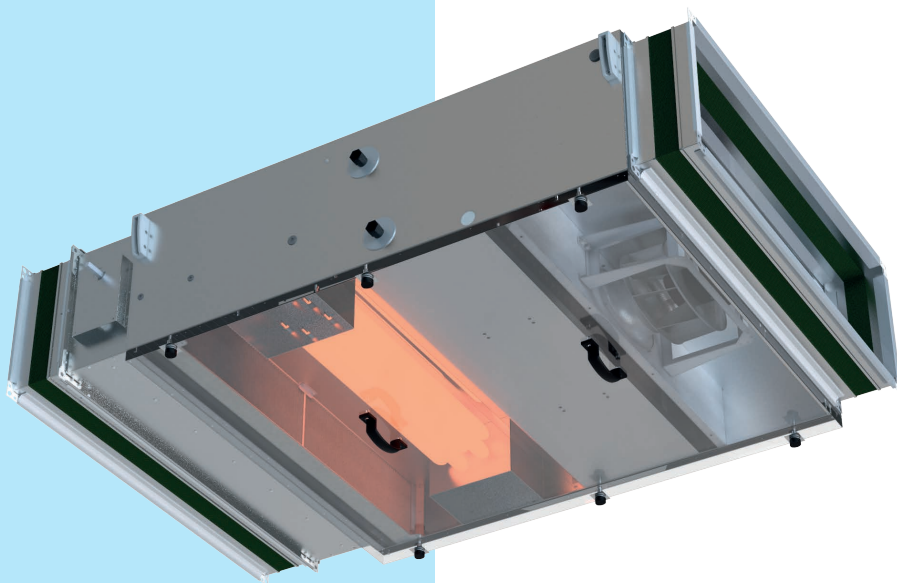




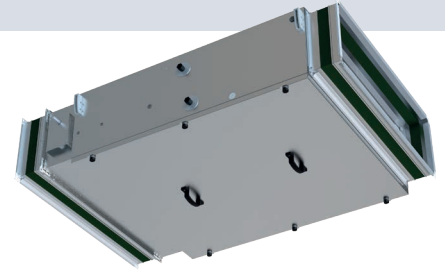
UVU

Unidirectional
ventilation units

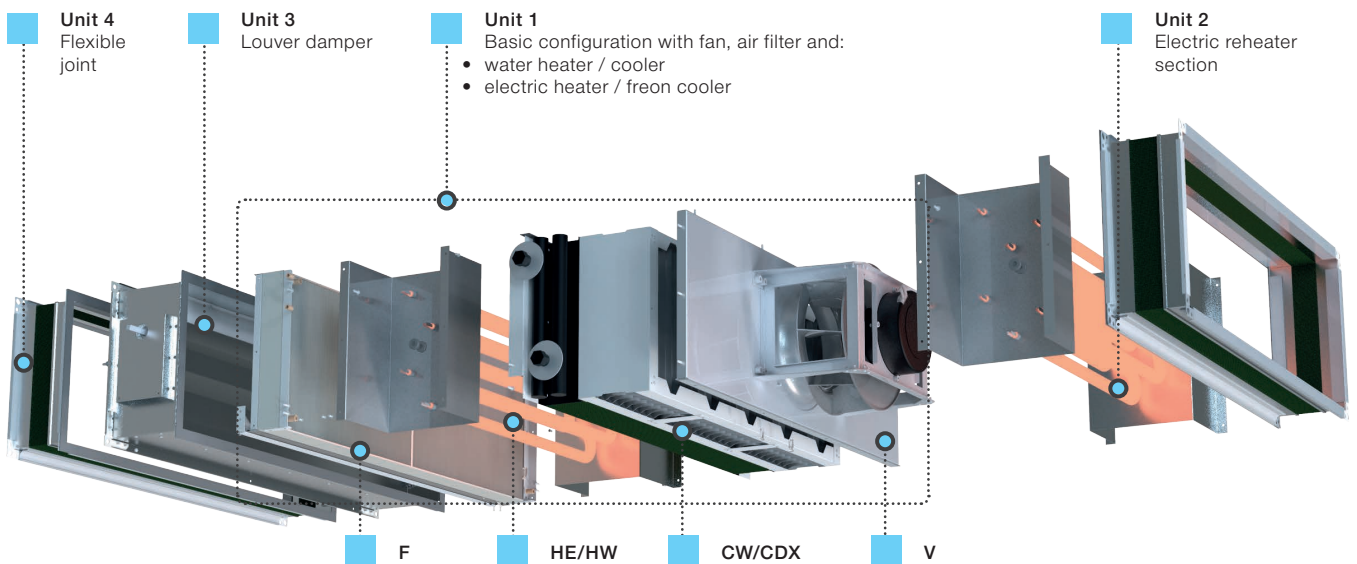


UVU VENTILATION UNITS

The compact UVU unidirectional ventilation units with additional heating and cooling modules provide comfortable living conditions in any premises, such as logistics facilities or gyms. Easy installation directly into the duct and the ability to combine sections allows achieving the required air parameters within an optimised time frame.



DESIGN



The panels of the casing are made of aluzinc (outer) and galvanized steel (inner), and are heat and sound insulated with 25 mm or 40 mm thick mineral wool depending on size. Maintenance is carried out from below through removable panels. Each unit size may comprise the following components to achieve the required air parameters:

- **V** – high-efficiency fan
- **F** – air filter class G4, F7
- **HW** – water heater
- **CW** – water cooler
- **CDX** – freon cooler
- **HE** – electric heater

APPLICATION



Sports facilities



Warehouses



Catering facilities



Residential complexes

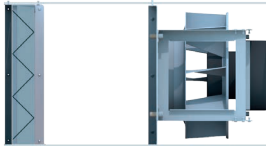


Industrial facilities



Garages and workshops

CONFIGURATIONS AND FUNCTIONAL UNITS



VF

Basic configuration



VFHW/CW

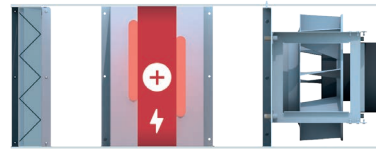
Configuration with filter and reversible water heat exchanger (heating/cooling)



VFHECW/CDX

Configuration with filter, electric heater and freon cooler

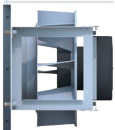
*More configurations available in the selection program



VFHE

Configuration with filter and electric heater

BASIC CONFIGURATION



V

Highly efficient fan

Fan with EC motor, smooth adjustment
0...10 V



F

Air filter

- G4 panel filter
- F7 panel filter

ADDITIONAL OPTIONS. HEATING



HW

Water heater

- two-row, standard version
- four-row, standard version



HE

Electric heater*

- three-phase, rated power 9 kW
- three-phase, rated power 18 kW
- three-phase, rated power 36 kW
- three-phase, rated power 48 kW

*The rated power can be increased by making the heater a separate section.

ADDITIONAL OPTIONS. COOLING



CW

Water cooler

- two-row, standard version
- four-row, standard version



CDX

R32/R410A freon cooler

- two-row, standard version
- four-row, standard version

CONFIGURATIONS AND PERFORMANCE

Standard size	Configuration	Air flow [m³/h]		1000	2000	3000	4000	5000	6000	7000	
		min.	max.	m³/h							
AV01 UVU 1000	VF	400	1000								
AV02 UVU 2000		800	2500								
AV04 UVU 4000		1600	4800								
AV06 UVU 6000		2400	6400								

Standard size	Configuration	Air flow [m³/h]		1000	2000	3000	4000	5000	6000	7000	
		min.	max.	m³/h							
AV01 UVU 1000	VFHW/CW	400	870								
AV02 UVU 2000		800	2150								
AV04 UVU 4000		1600	4350								
AV06 UVU 6000		2400	6100								

Standard size	Configuration	Air flow [m³/h]		1000	2000	3000	4000	5000	6000	7000	
		min.	max.	m³/h							
AV01 UVU 1000	VFHECW/CDX	400	900								
AV02 UVU 2000		800	2300								
AV04 UVU 4000		1600	4500								
AV06 UVU 6000		2400	6200								

Standard size	Configuration	Air flow [m³/h]		1000	2000	3000	4000	5000	6000	7000	
		min.	max.	m³/h							
AV01 UVU 1000	VFHE	400	1000								
AV02 UVU 2000		800	2400								
AV04 UVU 4000		1600	4700								
AV06 UVU 6000		2400	6300								



The selection of units is available at
vents-selector.com/nrvu_uvu



The brochure information is for reference only.

VENTS reserves the rights to modify any of its products' features, designs, components and specifications at any time and without notice to maintain the development and quality of manufactured goods.

2022-04